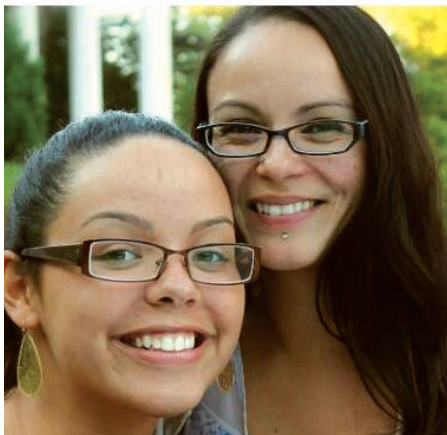




WORCESTER
MASSACHUSETTS

amazon proposal



birthplace of the smiley face | home to many smiling faces





WORCESTER
MASSACHUSETTS

amazon proposal

Table of Contents

WORCESTER AT-A-GLANCE.....	9
QUALITY OF LIFE	10
TRANSPORTATION	17
EMPLOYMENT BY INDUSTRY	20
INTELLECTUAL CAPITAL	27
TECHNOLOGY & INNOVATION.....	38
ENTREPRENEURSHIP	41
SUSTAINABILITY	44
PROPOSED SITE	47
INCENTIVES	53
WHY WE LOVE WORCESTER	57

Edward M. Augustus, Jr.
City Manager



Joseph M. Petty
Mayor

CITY OF WORCESTER

October 19, 2017

Jeffrey Bezos
Chief Executive Officer
Amazon
410 Terry Ave. North
Seattle, WA 98109

Dear Mr. Bezos:

As the Mayor and City Manager of the City of Worcester and with the support of the Economic Development Coordinating Council including the Worcester Regional Chamber of Commerce, Worcester Business Development Corporation and Massachusetts Biomedical Initiatives, we ask for your consideration in locating Amazon HQ2 in Worcester, Massachusetts.

Centered in the Heart of the Commonwealth, Worcester combines the warmth of a small town with the vibrancy of a thriving metropolis. A center of commerce, industry, healthcare and education, the city of Worcester is undergoing an economic resurgence and has repositioned itself in recent years to accommodate the needs of a dynamic economy. Our city has successfully demonstrated its ability to adapt quickly to a competitive and innovative marketplace. Today, Worcester is the focus of \$2.6 billion in private and public investment including Gateway Park, City Square, Mercantile Center and the Canal and Theatre Districts.

Worcester is enjoying a world-class restaurant scene, a burgeoning reputation as a hub for the arts and a rapidly developing downtown. Worcester is home to 35,000 college students, and increasingly they are choosing to live, work, and play locally. Young entrepreneurs are creating innovative maker spaces, simulation technology companies and sustainable business enterprises as well as opening breweries, cafes, and boutiques. They're starting families and working to make Worcester an even better place to live.

The second largest city in New England, Worcester is also a leader in biotechnology, advanced manufacturing, information technology, health care, medical research, robotics and video game design. These industries are supported by institutions like Worcester Polytechnic Institute, the College of the Holy Cross, UMass Medical School, and AbbVie.

Worcester's recent growth can also be attributed to the affordable cost of living, accessibility, and quality of life. These characteristics are the reason why businesses



OFFICE OF THE CITY MANAGER, CITY HALL, WORCESTER, MA 01608
TELEPHONE 508-799-1175 / FAX 508-799-1208
EMAIL: citymanager@worcesterma.gov



like the Hanover Insurance Group, Polar Beverages and Table Talk Pies operate in Worcester. In addition, approximately 8.5 million people live within a 60-mile radius of Worcester and 135 colleges, universities and institutes are located within an hour's drive and provide a highly-skilled workforce. Area transportation infrastructure includes major interstate highways, commuter rail to Boston as well as Worcester Regional Airport, Boston Logan International Airport, T.F. Green Airport and Bradley International Airport. This combination of assets provides unique opportunities for dynamic business growth.

The Economic Development Coordinating Council and the City of Worcester stand ready to assist Amazon in all elements of the development process including identifying potential sites, securing the required local and state permits and approvals expeditiously, and providing financial assistance programs and incentives.

Worcester, Massachusetts is in the midst of a renaissance. Once a manufacturing powerhouse that saw the rise of the industrial revolution, we have returned to our roots and built an economy based on innovation and entrepreneurship. The revitalized mill and factory buildings dotting our landscape maintain our historic integrity. Amazon HQ2 will help define our future as well as Amazon's.

Sincerely,



Joseph M. Petty
Mayor



Edward M. Augustus, Jr.
City Manager

JAMES P. MCGOVERN
2ND DISTRICT, MASSACHUSETTS

COMMITTEE ON RULES

COMMITTEE ON AGRICULTURE

SENIOR DEMOCRATIC WHIP

Congress of the United States
House of Representatives

Washington, DC 20515-2102

<http://www.mcgovern.house.gov>

October 13, 2017

438 CANNON HOUSE OFFICE BUILDING
WASHINGTON, DC 20515-2102
(202) 225-6101

DISTRICT OFFICES:
12 EAST WORCESTER STREET, SUITE 1
WORCESTER, MA 01604
(508) 831-7356

94 PLEASANT STREET
NORTHAMPTON, MA 01060
(413) 341-8700

24 CHURCH STREET, ROOM 27
LEOMINSTER, MA 01453
(978) 466-3552

Jeffrey Bezos, Chief Executive Officer
Amazon
410 Terry Avenue, North
Seattle, WA 98109

Dear Mr. Bezos:

I am writing on behalf of the City of Worcester's application to serve as the home of Amazon HQ2. I am proud to call Worcester my hometown. Worcester is a city with rich history and culture; a city that is rapidly changing from its industrial past to a center of technology and innovation.

Twenty years ago, many of us shared a bold vision for the City of Worcester. Much of that vision is a reality today because of the power of public-private partnerships and the determination of the people of Worcester. Those partnerships transformed an underutilized parcel of land into a thriving center of research, innovation, and commerce; created affordable housing units for families from all socio-economic backgrounds; and undertook an aggressive effort to expand access to commuter rail spurring unprecedented investment in downtown Worcester near historic Union Station. Today, when I look at Worcester, I see a great city – a world class city; a city that knows what it is and where it is going; a city that has fully embraced the power of partnerships to shape its bright future. It is my hope that Amazon will become an important partner in the City of Worcester to make our bright future even brighter.

Many of our businesses and institutions are leaders in their respective fields: from biotechnology and advanced manufacturing to health care and medical research. Worcester is centrally located with easy access to interstate highways, commuter and freight rail lines, and four major airports. Some 35,000 college students call Worcester their home and many are choosing to stay here after graduation because of the affordable housing stock and our unique and growing restaurant, cafe, boutique, and arts scene.

As you can tell, I am proud of all Worcester has to offer. Worcester is a proud city, and I am certain Amazon would be proud to call Worcester its home too. If I can be of any help in this process please do not hesitate to contact me.

Sincerely,



James P. McGovern
Member of Congress

JPM/sn



COMMONWEALTH OF MASSACHUSETTS
THE GENERAL COURT

STATE HOUSE, BOSTON 02133-1053

October 5, 2017

To Whom It May Concern:

The Worcester, Massachusetts delegation is proud to support the city's application to Amazon to locate HQ2 in Worcester. Worcester is a unique city with a vibrant energy and culture that drives growth and characterizes livability. The City is welcoming to businesses and families alike. Worcester is proud of its strong roots and past but also its progressive and innovative future.

Worcester is undergoing a renaissance not seen since the turn of the 20th century. A revitalized and developing downtown, a world-class art and restaurant scene, and a thriving creative economy built on entrepreneurship all have made Worcester a destination city.

As the second largest city in New England, Worcester has transformed itself into a leader in biotechnology, advanced manufacturing, information technology, health care, medical research, and video gaming and design. With its 184,000 residents and central location within the state, Worcester combines the warmth of a small town and the liveliness of a thriving city.

Worcester is home to nine colleges and universities (a half-dozen more in neighboring communities), including the University of Massachusetts Medical School, Worcester Polytechnic Institute, College of the Holy Cross, Clark University, MCPHS University and Tufts Cummings School of Veterinary Medicine. The 35,000 college students are graduating with an entrepreneurial mindset, creating innovative maker spaces, simulation technology companies, and sustainable business enterprises, as well as opening restaurants, cafes, and boutiques.

Worcester's recent growth can also be attributed to the affordable cost of housing, its high quality of life, ease of accessibility, and growing knowledge-based economy. Add roughly 8.5 million people living within a 60-mile radius of Worcester, a skilled workforce educated by more than 135 colleges and institutes located within an hour's drive, and strong existing infrastructure with easy access to major interstate highways, commuter rail to Boston, and major airports, including Worcester Regional Airport, Logan International Airport, T.F. Green Airport, and Bradley International Airport, and unique opportunities exist for dynamic business growth. Worcester should be the home of Amazon HQ2.

The Worcester delegation is proud to support and champion the Amazon application and stands ready to assist in bringing Amazon to Worcester. There is no better choice than Worcester and Massachusetts. Thank you for your consideration.

Sincerely,

A handwritten signature in blue ink, reading "Michael O. Moore".

MICHAEL O. MOORE
State Senator
Second Worcester District

A handwritten signature in blue ink, reading "Harriette L. Chandler".

HARRIETTE L. CHANDLER
State Senator
First Worcester District



JAMES J. O'DAY
State Representative
Fourteenth Worcester District



DANIEL M. DONAHUE
State Representative
Sixteenth Worcester District



KATE D. CAMPANALE
State Representative
Seventeenth Worcester District



JOHN J. MAHONEY
State Representative
Thirteenth Worcester District



MARY S. KEEFE
State Representative
Fifteenth Worcester District

a message from the **WORCESTER** economic development coordinating council

The economic development leadership in Worcester, Massachusetts is collaborative and ready to respond to Amazon's needs and requirements. We work closely with the city council, state officials and legislators, developers, presidents of area colleges and universities, the Central Massachusetts Workforce Investment Board, and many other stakeholders.

We have a proven history of responding to new employers' site requirements, connecting companies with available tax incentives, and creating training programs to prepare Worcester residents for any workforce needs or skills gaps.

We would welcome the opportunity to discuss our city's suitability for Amazon's second headquarters.

Sincerely,

EDCC Executive Committee

economic development team



Edward M. Augustus, Jr.

City Manager
City of Worcester
508.799.1175
CityManager@worcesterma.gov
www.worcesterma.gov



Timothy P. Murray

President and CEO
Worcester Regional Chamber of Commerce
508.753.2924
tmurray@worcesterchamber.org
www.worcesterchamber.org



Craig L. Blais

President and CEO
Worcester Business Development Corp.
508.755.5734
blais@worcesterbdc.com
thewbdc.com



Kevin O'Sullivan

President and CEO
Massachusetts Biomedical Initiatives
508.797.4200
kosullivan@massbiomed.org
www.massbiomed.org

WORCESTER AT A GLANCE MASSACHUSETTS

New England's second largest city is centrally located in the heart of Massachusetts and the region.



city BY THE NUMBERS

Population (2016) | **184,500**

Population within 60 Miles | **8.5 Million**

Median Age of Worcester Residents | **33.8**

Immigrants | **37,970** from Countries | **85**

Languages Spoken in Public Schools | **90+**

Land Area | **38.6 Miles**

FY17 Area Median Family Income | **\$85,700**

Class A Office Rents | **\$21 - \$45 Per SF**

Number of Hotel Rooms in Worcester | **1,136**

Number of Hotel Rooms in Worcester Area | **2,500**

Colleges in Worcester | **9**

College Students in Worcester | **35,000+**

Colleges / Training Institutes within 50 Miles | **135**

MBTA Commuter Trains to Boston | **20 Round Trips Daily**

MBTA Passengers to Boston | **1,500 Daily**

WRTA Annual Passenger Trips (Bus Service) | **3.8 Million**

Average Sale Price (Single Family) | **\$234,000**

Median Rent Price | **\$1,400**

Arts & Cultural Organizations | **70+**

Worcester City Parks | **62**

Acres of Parklands | **1,215**

“ I decided to invest in Worcester because of the combination of the tangibles which include location, workforce, affordable housing, infrastructure and healthcare and the intangibles which include the passion of the residents, cooperation of city officials to get things done, and the desire to help this great community achieve its potential. ”

– Cliff Rucker, Owner
Worcester Railers Hockey Club
Worcester Ice Center
Worcester Real Estate Developer

QUALITY OF LIFE



WORCESTER
MASSACHUSETTS

amazon proposal

a livable THRIVING CITY

A Community Where Your Employees Will Want to Be



Arts, Entertainment, Nightlife – it's all here!

Restaurants

Worcester's restaurant scene is booming—garnering attention from the Boston Globe and Providence Journal. Last year, more than 55 new restaurants opened in the city.

Breweries

Worcester has become a hot spot for craft breweries and the beer business, including: Wormtown Brewery, Flying Dreams Brewing, 3cross Brewing and Greater Good Imperial Brewing.



Performing Arts

Worcester offers off-Broadway shows, world-renowned art galleries, dance, music and concert halls, and public art.

- Worcester Art Museum
- DCU Center - Arena and Convention Center
- The Hanover Theatre for the Performing Arts
- The Worcester Palladium
- Mechanics Hall

PAGE 2 **quality** of **LIFE** in WORCESTER

Worcester is a family friendly city



Sports Entertainment

Worcester is home to the Worcester Bravehearts, a Futures League baseball team and the Worcester Railers ECHL hockey team affiliated with the NHL N.Y. Islanders.

Shopping

New shops and boutiques, such as those found at the Crompton Collective, offer a variety of handcrafted or locally-sourced goods.

Festivals and Events including:

- St. Patrick's Day Parade
- Farmers Markets
- Latin American Festival
- Worcester Caribbean American Carnival
- Festival of Lights
- Worcester Pride Festival
- New England VegFest
- stART on the Street



PAGE 3 **quality** of **LIFE** in WORCESTER

Affordable with access to big city amenities

housing costs

AVG. PROPERTY AVG. PRICE

Single-Family Home	\$234,000
1 Bedroom	\$1,010
2 Bedroom	\$1,260
3 Bedroom	\$1,500
4 Bedroom	\$1,650

(source: MLS, 2017)

*So far in 2017, the most expensive home sold in Worcester was less than \$700,000. In Boston, more than half are being sold above \$1 million. (Source: MLS and Boston Globe).

Residential Tax Rate

- \$19.22 per \$1,000 of value
- Average 2016 Residential Tax Bill: \$3,871
- Average commute time: Less than 20 minutes
- Local Sales Tax: None
- Local Income Tax: None



cost of living indices

	SEATTLE	WORCESTER
Overall	176.5	106.8
Food	110.2	96.4
Housing	314.5	107.1
Utilities	94.0	116.8
Transportation	113.3	108.5
Health	116.2	122.8
Miscellaneous	113.1	104.3

100=national average



\$575K in Worcester, MA v. Seattle, WA Source: Realtor.com



\$575,000

6832 25th Ave. NE, Seattle, WA

2 bed
1 bath
770 sq. ft.
5,227 sq. ft. lot



\$579,900

6 Surrey Lane, Worcester, MA

5 bed
3 full & 2 half baths
3,224 sq. ft.
0.78 acres

quality of **LIFE** in WORCESTER



WHAT YOUR MONEY BUYS | SEATTLE, WA & WORCESTER, MA

A salary of \$50,000 in Seattle, Washington could decrease to \$30,255 in Worcester, Massachusetts due to cheaper cost of living.

COMPARISON HIGHLIGHTS

- Worcester is 39% cheaper than Seattle.
- Housing is the biggest factor in the cost of living difference.
- Housing is 65% cheaper in Worcester.
- 100=national average

Worcester has recreation opportunities for young, old, and furry!

The City has a free city-wide program Recreation Worcester, operating at 10 parks across the City, Monday - Friday from 9 a.m. to 5:30 p.m. throughout the summer. Recreation Worcester youth participate in a number of positive, healthy, educational activities. In 2016, Recreation Worcester served more than 1,700 youth.

Worcester has 62 parks including splash pads, disc golf, a new multigenerational park and universally accessible playground, public 18-hole golf course, and more. Worcester is also home to the Greater Worcester Land Trust and Mass Audubon, providing almost 3,000 acres of land and trails in the area. Worcester's first dog park opened in 2017, with four additional neighborhood-based dog parks opening by 2020.

*Best state
in the U.S.*

– U.S. News &
World Report,
2017

– and –

*#1 in health-
care access*

– U.S. News &
World Report,
2017



PAGE 5 **quality** of **LIFE** in WORCESTER



parks & recreation

Number of Parks	62
Number of Playgrounds	34
Number of Fields for Sports	124
Swimming Beaches, Pools, Spray Parks	7
Total Park Acreage	1,320
Percentage of Total Acreage in City	6.3%
Number of State Parks	1

5 TIME All-American City Award Winner, the most in U.S.
- *National Civic League*

Top 10 City for Families - *Parenting Magazine*, 2014

#1 for Young Singles - *Zillow*, 2013

#16 in U.S. as Safest Place for Kids - *Value Penguin*, 2017

Safety

In providing the citizens of the City of Worcester a safer community, the dedication and commitment of the men and women of the Worcester Police Department is unmatched. WPD promotes the highest level of public safety and quality of life, through exceptional police services to city residents, businesses and visitors.

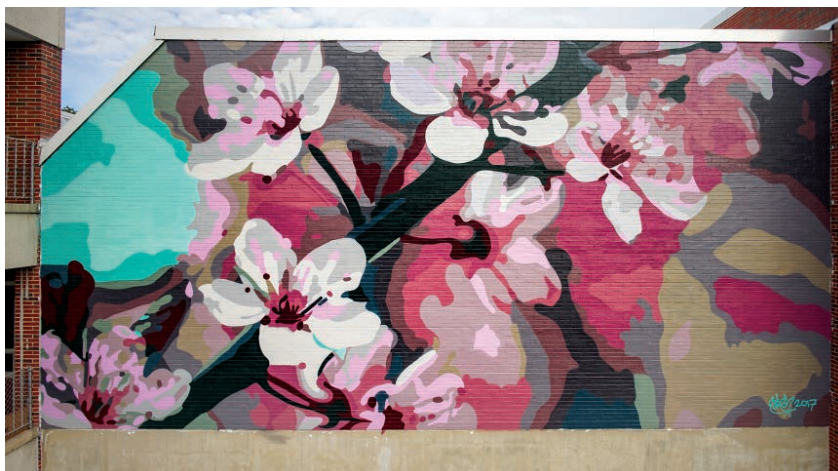
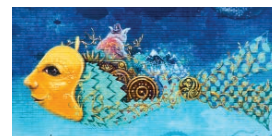
Worcester Police Mounted Patrol made its first public appearance in the summer of 2017.

Worcester ranked in the top 20 of a recent study on the safest metropolitan areas in the country. (Value Penguin 2017)



WORCESTER as a CANVAS

Pow! Wow! Worcester is 10-day festival celebration where artists from around the world are invited to leave their talent on display by painting large-scale murals across the city. Worcester was the first city on the U.S. eastern coast to host the international festival.



TRANSPORTATION



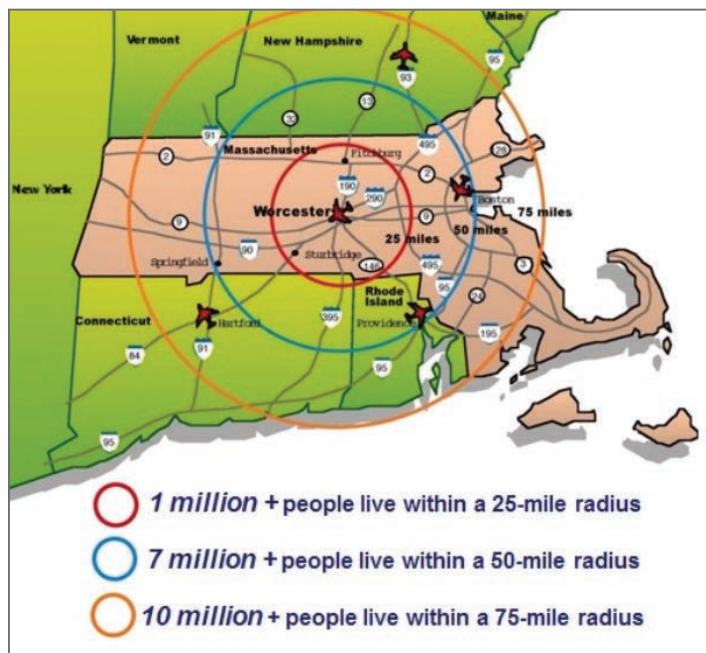
WORCESTER
MASSACHUSETTS

amazon proposal

TRANSPORTATION & **logistics**

GETTING TO AND FROM WORCESTER

Planes, Trains, and Automobiles...and Buses & Bikes



Worcester is serviced by 5 regional, national and international airports, including:

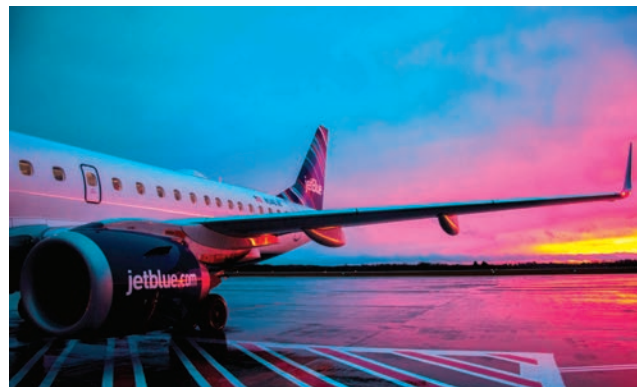
air travel

AIRPORT	CITY	DISTANCE
Worcester Regional (ORH)	Worcester, MA	5 miles
Logan International (BOS)	Boston, MA	46 miles
T.F. Green (PVD)	Providence, RI	53 miles
Bradley International (BDL)	Hartford, CT	60 miles
Manchester Regional (MHT)	Manchester, NH	70 miles



Located in the heart of the Commonwealth, Worcester is 45 minutes west of Boston, MA and north of Providence, RI.

The Massachusetts Turnpike (I-90) offers direct connection to the City from the east and west and Route 146 connects from the south.



By Air

The Worcester Regional Airport (ORH) is owned and operated by Massport and is home to:

- JetBlue provides daily commercial service to Florida and JFK-NYC.
- Rectrix Cape Cod shuttle passenger service.
- Rectrix charter flights, with approximately 50,000 square feet of hangar and office space, is capable of accommodating any large corporate aircraft. Rectrix is looking to construct additional hangar space within the next 5 - 7 years in conjunction with anticipated growth at Worcester Regional Airport (ORH).

TRANSPORTATION & logistics

GETTING TO AND FROM WORCESTER

BY CAR

Worcester has an extensive highway network including four interstate highways and five major state highways.

- Massachusetts Turnpike (I-90)
- Route 146
- Route 122
- I-290
- I-395
- I-190
- Route 20
- Route 9
- Route 12

Within the city, taxis, liveries, Uber and Lyft are all available, as well as Worcester's new bike share, ofo.



BY RAIL

Worcester's historic and beautifully restored Union Station is serviced by:

- Massachusetts Bay Transportation Authority (MBTA) commuter rail, which runs 20 times daily to Boston.
- The MBTA express trains go from Worcester to Boston in less than one hour.
- Amtrak daily service to and from Albany, Chicago, New York and Washington, D.C.

BY BUS

Union Station, in the heart of downtown, is served by several bus lines, including:

- Greyhound and Peter Pan, connecting to destinations throughout New England and beyond.
- The Worcester Regional Transit Authority, with bus service throughout the city and 37 regional communities.



EMPLOYMENT BY INDUSTRY



WORCESTER
MASSACHUSETTS

amazon proposal

labor & wage **RATE** INFORMATION

Overview of all Talent Levels in the MSA*

Among the largest cities in New England, Worcester has the 2nd highest percentage of adults with a bachelor's degree.

The largest industries in Worcester

Education and Healthcare

The education and healthcare sector **grew by 35.5%** between 2000 and 2010 in the City of Worcester and by 2010, represented the single largest employment base in the city with 28,956 employees.

Similarly, in 2010, this sector represented the largest employment base in Worcester County with 71,277 people working in education and healthcare across the county.

Listed below are the average salaries for these two subsectors:

Healthcare | \$46,647

Educational Services | \$33,670

Due to the astronomical growth in this sector over the last decade, and the anticipated nationwide growth in the healthcare sector, it is reasonable to assume that the education and healthcare sector will remain strong and present growth opportunity for the region.



Professional, Scientific and Technical

Between 2000 and 2010, the professional, scientific and technical sector **grew by 32.6%** or 3,498 employees in Worcester County. In particular, the scientific research and development subsector grew employment by 37.7% and the Computer Systems Design and Related Services subsector, which includes video game design, grew employment by 46.3% across the County.

Average annual salary in Worcester County (2010):

Professional, Scientific and Technical Services | \$68,805

This sector thrives on clusters, which exist and are growing in Worcester County thanks to the region's unique resources such as the Massachusetts Digital Game Institute (MassDiGI), University of Massachusetts Medical School, a thriving biotech incubator at the Massachusetts BioMedical Initiatives (MBI), and Gateway Park, Worcester Polytechnic Institute's Center that hosts early stage science and engineering companies.

Through continued collaboration, investment and focus on growing these existing clusters, it is expected that the sector will continue to expand in the future.

*Metropolitan Statistical Area

labor & wage **RATE** INFORMATION

Manufacturing

In 2010, Manufacturing in Worcester was the strongest sector in comparison to Boston. Across Worcester County, 31,279 people were employed in manufacturing in 2010, and nearly 10,000 people were employed in manufacturing in the City of Worcester. The average annual wage across the sector in Worcester County was \$55,879 in 2010. There is evidence that the Manufacturing sector is poised for significant growth statewide and the Greater Worcester Region is uniquely positioned to realize significant industry growth.

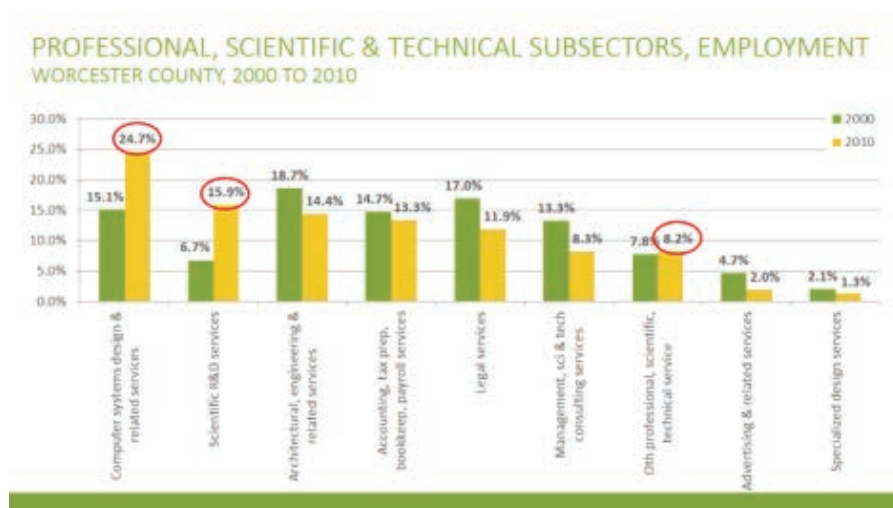
employment by industry, CITY OF WORCESTER						
	2001	PERCENT OF TOTAL (2001)	2011	PERCENT OF TOTAL (2011)	PERCENTAGE CHANGE, 2001-2011	TOTAL CHANGE
Total, All Industries	100,977	100%	96,671	100.00%	-4.26%	-4,306
Goods-Producing Domain	14,674	14.53%	9,878	10.22%	-32.68%	-4,796
Construction	4,025	3.99%	3,094	3.20%	-23.13%	-9.31
Manufacturing	10,626	10.52%	6,780	7.01%	-36.19%	-3,846
Natural Resources and Mining	23	0.02%	N/A	N/A	-100.00%	-23.00%
Service-Providing Domain	86,303	85.47%	86,793	89.78%	0.57%	490
Trade, Transportation and Utilities	13,452	13.32%	12,239	12.66%	-9.02%	-1,213
Information	1,796	1.78%	1,559	1.61%	-13.20%	-237.00%
Financial Activities	7,999	7.92%	6,496	6.72%	-18.79%	-1,503
Professional and Business Services	12,765	12.62%	8,760	9.06%	-31.37%	-4,005
Education and Health Services	36,186	35.84%	43,324	44.82%	19.73%	7,138
Leisure and Hospitality	6,712	6.65%	7,018	7.26%	4.56%	306
Other Services	4,108	4.07%	4,293	4.44%	4.50%	185
Public Administration	3,285	3.25%	3,104	3.21%	-5.51%	-181

A large majority of companies that chose Massachusetts as a place to expand their business would do it again, primarily based on its innovative economy, industry clusters, and skilled workforce, according to "Choosing Massachusetts for Business: Key Factors in Location Decision-Making," an 18-month study commissioned by MassEcon, the nonpartisan economic development organization, and conducted by the UMass Donahue Institute's Economic and Public Policy Research Group (2017).



PAGE 3 labor & wage **RATE** INFORMATION

Information for Executive/Management, Engineering (software development engineers), Legal, Accounting, and Administrative



Top 10 City
for Families

– Parenting
Magazine, 2014

Ability to Attract Talent Regionally

We know access to talent is perhaps the most important factor in a business location decision. That's the Worcester advantage.

- Lower cost of living than Boston and other major metropolitan areas
- Quality of life attractive for people relocating and talent retention
- Proximity to over 100 colleges and universities within 50 miles

In Worcester, there is the ability to partner with area colleges and universities for a talent pipeline. Many area college graduates remain within the region with 39% of the class of 2015 currently living in Worcester and Worcester County, up from 32% in 2005 (Talent Retention 2016, WRRB). Students in the study revealed they would stay in Worcester if offered a job, with 77% of the respondents saying that job prospects were "extremely important."

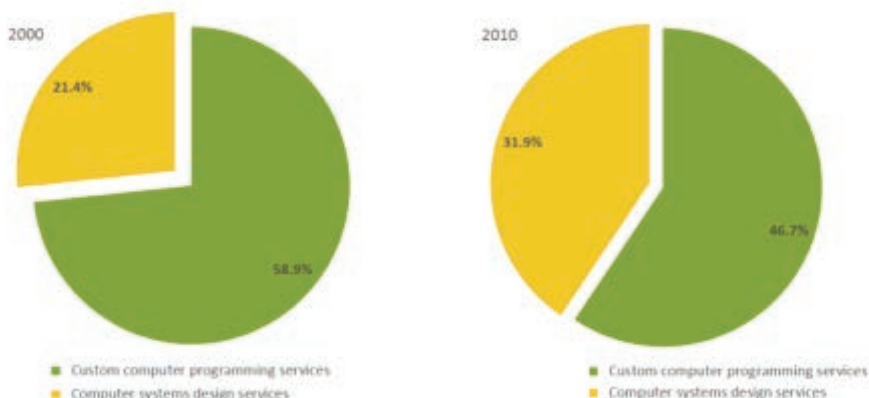
A population migration study showed that the Worcester metropolitan area fares well in terms of attracting educated talent with a 2012 net gain of over 600 new residents with graduate or professional degrees, over 100 new residents with bachelor's degrees, and nearly 75 new residents with associate's degrees settling in the region. (Ibid)

PAGE 4 labor & wage **RATE** INFORMATION

Opportunities to Hire Software Development Engineers

When Worcester's area college students graduate, they overwhelmingly prefer to stay in Massachusetts over any other location. Of WPI's approximately 35,000 alumni who are living in the United States, almost half live in Massachusetts. This is a highly skilled workforce that shows a clear preference to stay in Massachusetts. As new and pending graduates start their professional careers, many see Amazon as an employer of choice.

Computer Systems Design and Related Services, Worcester County, 2000 - 2010



#1 for
Young Singles
– Zillow, 2013

market salary



Software Developers,
Applications; Software
Developers, Systems
Software in Worcester MSA

(TalentNeuron 2017)

average weekly wage by industry, CITY OF WORCESTER

	NOMINAL WAGE 2001	REAL WAGE 2001	NOMINAL WAGE 2011	REAL WAGE 2011	REAL PERCENTAGE CHANGE, 2001 - 11	REAL WAGE 2001 - 2011 CHANGE
Total, All Industries	\$725	\$409	\$982	\$423	3.42%	\$14
Goods-Producing Domain	\$888	\$501	\$1,215	\$524	4.59%	\$23
Construction	\$942	\$531	\$1,146	\$494	-6.67%	-\$37
Manufacturing	\$870	\$491	\$1,247	\$538	9.57%	\$47
Natural Resources and Mining	\$244	\$138	N/A	N/A	-100.00%	-\$138
Service-Providing Domain	\$698	\$394	\$956	\$412	4.57%	\$18
Trade, Transportation and Utilities	\$594	\$335	\$694	\$299	-10.75%	-\$36
Information	\$869	\$490	\$1,874	\$808	64.90%	\$318
Financial Activities	\$1,048	\$591	\$1,400	\$604	2.20%	\$13
Professional and Business Services	\$753	\$425	\$1,089	\$470	10.59%	\$45
Education and Health Services	\$721	\$407	\$1,028	\$443	8.85%	\$36
Leisure and Hospitality	\$291	\$164	\$354	\$153	-6.71%	\$11
Other Services	\$417	\$235	\$454	\$196	-16.60%	\$39
Public Administration	\$888	\$501	\$1,271	\$548	9.38%	\$47

“With multiple operations across the country, Polar Beverages continues to invest and grow in Worcester because of a hardworking and healthy workforce. Moreover, Worcester’s central location and access via multiple transportation modes to all of New England and New York is a strategic asset. Lastly, a collaborative spirit exists between business and government that allows Worcester to be both nimble and responsive in seeking out opportunities.”

– Ralph D. Crowley, Jr., President, Polar Beverages

labor &
wage**RATE** INFORMATION

average weekly wage by industry, COMMONWEALTH OF MASSACHUSETTS

	NOMINAL WAGE 2001	REAL WAGE 2001	NOMINAL WAGE 2011	REAL WAGE 2011	REAL PERCENTAGE CHANGE, 2001 - 11	REAL WAGE 2001 - 2011 CHANGE
Total, All Industries	\$865	\$488	\$1,147	\$495	1.43%	\$7
Goods-Producing Domain	\$1,018	\$574	\$1,394	\$601	4.70%	\$27
Construction	\$963	\$543	\$1,205	\$520	-4.24%	-\$23
Manufacturing	\$1,047	\$591	\$1,495	\$645	9.14%	\$54
Natural Resources and Mining	\$662	\$373	\$1,042	\$449	20.38%	\$76
Service-Providing Domain	\$834	\$470	\$1,114	\$480	2.13%	\$10
Trade, Transportation and Utilities	\$707	\$399	\$857	\$370	-7.27%	-\$29
Information	\$1,244	\$702	\$1,767	\$762	8.55%	\$60
Financial Activities	\$1,515	\$854	\$2,100	\$906	6.09%	\$52
Professional and Business Services	\$1,114	\$628	\$1,624	\$700	11.46%	\$72
Education and Health Services	\$715	\$403	\$1,022	\$441	9.43%	\$38
Leisure and Hospitality	\$347	\$196	\$427	\$184	-6.12%	-\$12
Other Services	\$477	\$269	\$545	\$235	-12.64%	-\$34
Public Administration	\$861	\$486	\$1,221	\$527	8.44%	\$41



INTELLECTUAL CAPITAL



WORCESTER
MASSACHUSETTS

amazon proposal

overview of HIGHER EDUCATION

"The innovation economy is part of the fabric of Massachusetts, Worcester, and WPI. We share many common interests and strengths with Amazon, and we have the potential and the expertise needed to help them thrive. WPI would relish the opportunity to provide them with access to - and development of - top talent, and to connect them to our amazing students and alumni."

- President Laurie Leshin, Worcester Polytechnic Institute

Every great American city has at least one college or university, Worcester has nine. Combined with three additional area colleges, the schools comprise the Higher Education Consortium of Central Massachusetts. Worcester's colleges and universities consistently appear in the U.S. News & World Report rankings as well as the Princeton Review.

Vital to the city's economy, the area's colleges and universities and their students bring a wealth of opportunity to the region, through academic collaborations, internships, research, and employment. As a consortium, local colleges and universities represent one of the area's largest employers with approximately 16,000 employees and over 35,000 students.



Worcester is proud of its incredibly diverse academic community ranging from UMass Medical, a top medical school; to Clark University, a regional leader in educating global citizens; and Becker College, with a leading program in interactive media design.

Worcester is home to a nationally ranked engineering school. WPI's 14 academic departments offer more than 50 undergraduate and graduate degree programs in science, engineering, technology, business, social sciences, and humanities and arts, leading to bachelor's, master's, and doctoral degrees. The university's curriculum features a flexible, rigorous program that is project-based and globally engaged, aimed at providing a quality experience and a positive impact for the communities it partners with. And in the past 10 years, WPI has increased its combined undergraduate and graduate student population by 68%, making it one of the fastest growing universities in the nation. In the most recent academic year, WPI granted 987 Bachelor's degrees, 626 Master's, and 45 PhD's. The vast majority of these degrees were awarded in STEM fields, with computer science related degrees accounting for more than half of all graduates.

Worcester Region AN EDUCATION HUB

Number of Graduates in Relevant Degrees Over the Past Three Years

The Worcester metropolitan statistical area (MSA), graduated 2,232 students with degrees in business, management, finance, accounting, computer science, engineering, and legal services in 2015, and employed 202,800 people with occupations reflective of relevant degrees in 2015.

Beyond Worcester, the three major MSAs in a 45-mile radius around the city graduated 17,527 students with relevant degrees and employed 1,870,000 people in relevant occupations in 2015. The graduate pool and workforce, outlined in the tables below, both showed positive growth rates in Worcester and in the regions surrounding Worcester.

Focusing on specific opportunities to hire software development engineers in the 45-mile radius of Worcester, 2,637 students graduated with degrees in and related to computer science, and computer technology. Applied math positions employed 162,000 people in 2015. The tables show three years of data on computer science related degrees and occupations.



relevant degrees*

CITY	2013	2014	2015	GROWTH
Worcester	1,931	1,979	2,232	13%
Boston	9,404	9890	10,270	8%
Providence	3,070	3100	3,160	13%
Springfield	1,618	1725	1,865	3%
45-mile radius	16,023	16,694	17,527	9%

*Relevant Degrees include: business and management, finance and accounting, computer science, electrical and computer engineering, and legal studies.

relevant jobs*

CITY	2013	2014	2015	GROWTH
Worcester	200,600	208,700	202,800	1%
Boston	1,170,400	1,187,100	1,204,000	3%
Providence	321,700	325,000	339,600	5%
Springfield	116,300	117,030	123,600	6%
45-mile radius	1,809,000	1,837,830	1,870,000	3%

*Relevant Jobs include professions in management, accounting and financial operations, computer science and applied math, business administration, engineering, and sales.

computer science degrees

CITY	2013	2014	2015	GROWTH
Worcester	162	155	245	34%
Boston	1,219	1,510	1,708	29%
Providence	338	366	419	19%
Springfield	183	204	265	31%
45-mile radius	1,902	2,235	2,637	28%

computer science jobs

CITY	2013	2014	2015	GROWTH
Worcester	16,100	16,410	15,300	-5%
Boston	104,900	112,600	123,800	15%
Providence	19,500	18,600	17,500	-11%
Springfield	5,600	6,500	5,900	5%
45-mile radius	146,100	154,110	162,500	10%

Worcester Region AN EDUCATION HUB

Within 50 miles of Worcester, there are 135 institutions of higher education, with a total enrollment of over 500,000 students. Some of the notable schools in the area: Harvard University, MIT, Tufts University, Brown University, Northeastern University, and 15 community colleges. Worcester is not only in close proximity to Boston and Providence, but also within an hour drive of Western MA, where there is another higher education cluster, including UMass Amherst, Smith College and others. The high concentration of educational institutions means that Worcester can offer employers a young, highly educated workforce.

WORCESTER AREA COLLEGES AND UNIVERSITIES



just a few of the region's accolades

- MA #1 in Education, U.S. News & World Report, 2017
- Holy Cross Ranked #2 Best Roman Catholic College in U.S., USA Today, 2017
- UMass Medical School #1 in New England for Primary Care, US News & World Report, 2017
- Assumption College Ranked Top 20 Best Value, U.S. News & World Report
- Holy Cross Ranked #5 Best Colleges in Massachusetts, USA Today, 2017

WPI ACCOLADES

WPI TOP 10 Colleges for Women in STEM fields. Research and Teaching

- Best Colleges Online, 2016

WPI #7 computer science major in the nation

- College Factual, 2015

WPI and Becker College both rank **Top 25** for Digital Game Design
- Gamedesigning.org, 2017

WPI #1 College Combining Research and Teaching
- Wall Street Journal, 2016

WPI #5 in U.S. for Career Services
- Princeton Review 2017-2018